

IBX Instrument Cases

SLOPING FRONT PANELS

The inclined display face of these front panels gives an improved viewing angle for desk mounted applications. They also provide additional internal space and cooling by way of a row of slots on the underface of the mouldings.

Contents of kit

| Description | Qty | Material/Finish |
|-------------|-----|------------------------------|
| Panel | 1 | ABS, light grey BS4800 00A01 |

SCREW-ON FRONT PANELS

These removable anodised aluminium front panels are attached to the infill mouldings and allow easy access without the need to dismantle the unit. Once assembled to the infills at both the front and rear they form a rigid chassis, thus allowing all wiring and testing to be carried out prior to the final assembly of the top and base.

Contents of kit

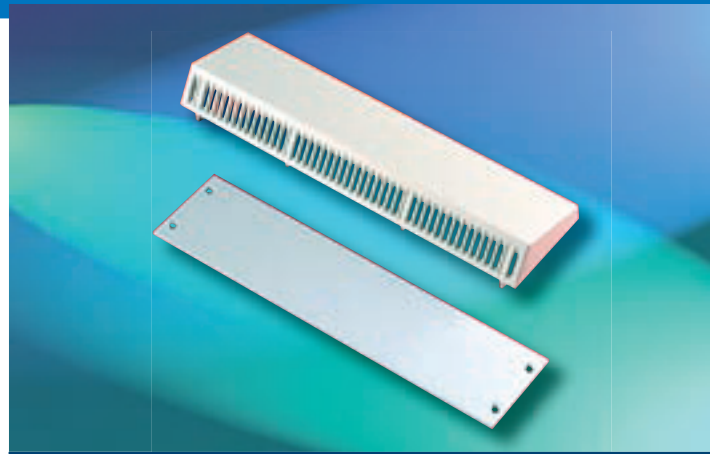
| Description | Qty | Material/Finish |
|-------------|-----|--------------------------|
| Panel | 1 | 3,0mm Anodised aluminium |
| Fixings | | |

CAPTURED FRONT PANELS

These anodised aluminium front panels are captured in slots in both the top and base during assembly of the unit. This provides an attractive frontal appearance with no obvious fixings and additional security.

Contents of kit

| Description | Qty. | Material/Finish |
|-------------|------|--------------------------|
| Panel | 1 | 1,2mm Anodised aluminium |

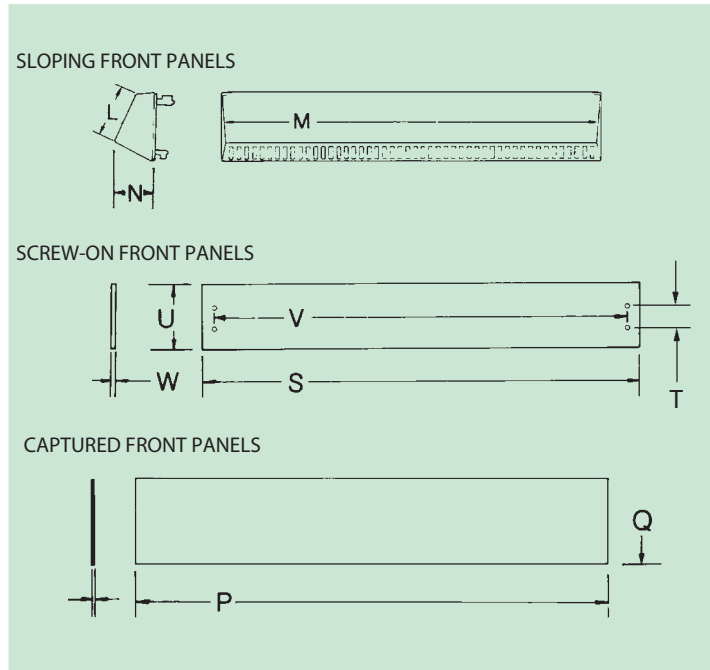


Panels standard



Panels custom

For details of a full range of compatible accessories, please refer to page 30.



Ordering information

| For case size | Plastic sloping front panels | | | | Screw-on front panels | | | | | Captured panels | | | | |
|---------------|------------------------------|-------|------|------------|-----------------------|------|------|-------|-----|-----------------|-------|------|------------|-----------|
| | Dimensions | | | Order code | Dimensions | | | | | Dimensions | | | Order code | |
| L | M | N | S | | T | U | V | W | P | Q | R | | | |
| 1 | - | - | - | - | - | - | - | - | - | - | - | - | - | - |
| 2 | 37,5 | 270,0 | 30,0 | 500-54506 | 263,5 | 13,0 | 39,0 | 250,0 | 3,0 | 500-54509 | 268,0 | 44,0 | 1,2 | 500-54512 |
| 3 | 61,0 | 270,0 | 30,0 | 500-54507 | 263,5 | 38,0 | 64,0 | 250,0 | 3,0 | 500-54510 | 268,0 | 69,0 | 1,2 | 500-54513 |
| 4 | 86,0 | 270,0 | 30,0 | 500-54508 | 263,5 | 63,0 | 89,0 | 250,0 | 3,0 | 500-54511 | 268,0 | 94,0 | 1,2 | 500-54514 |